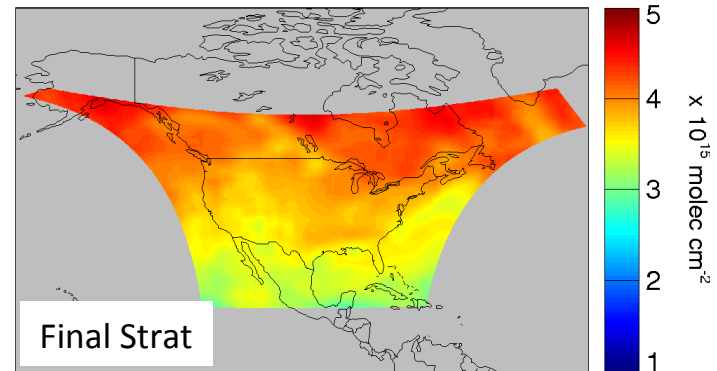
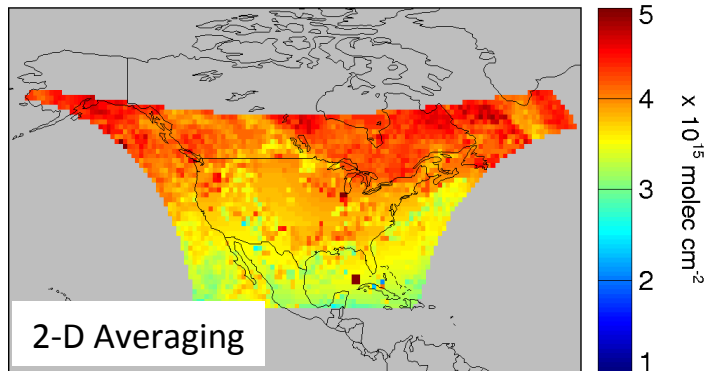
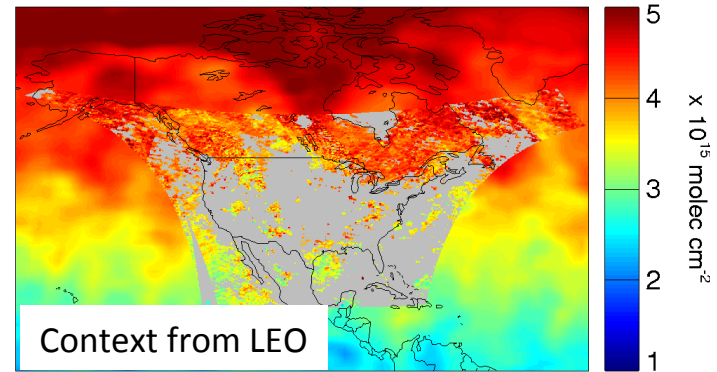
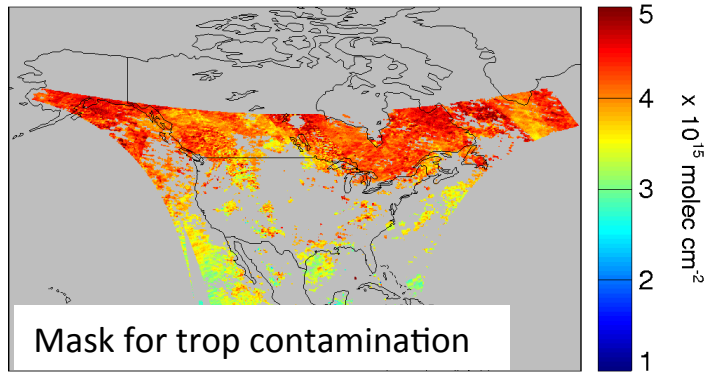
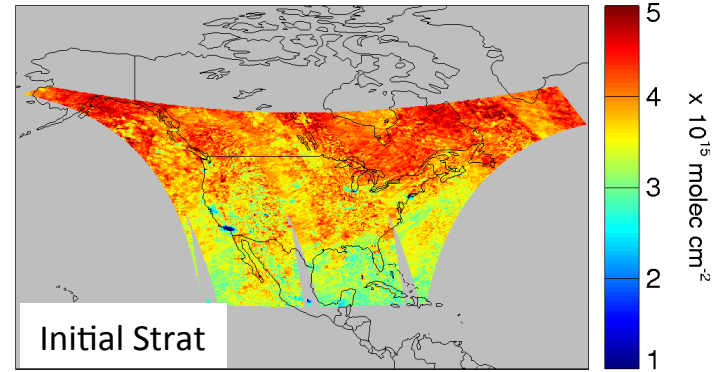
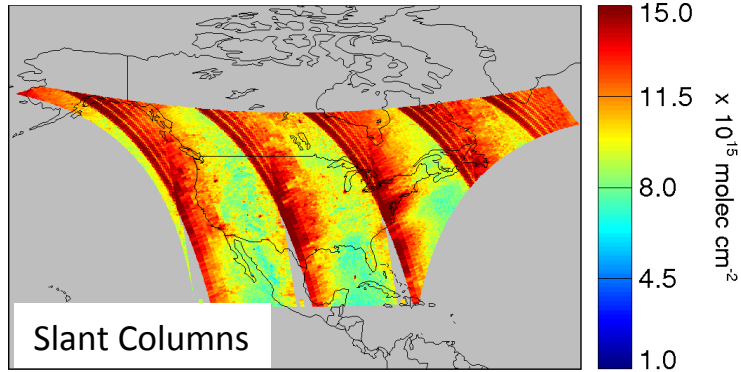


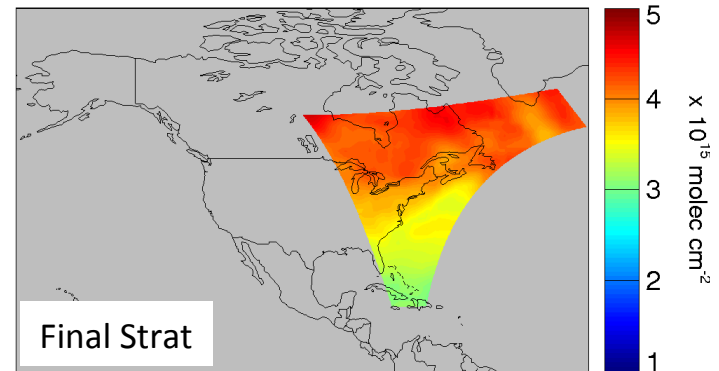
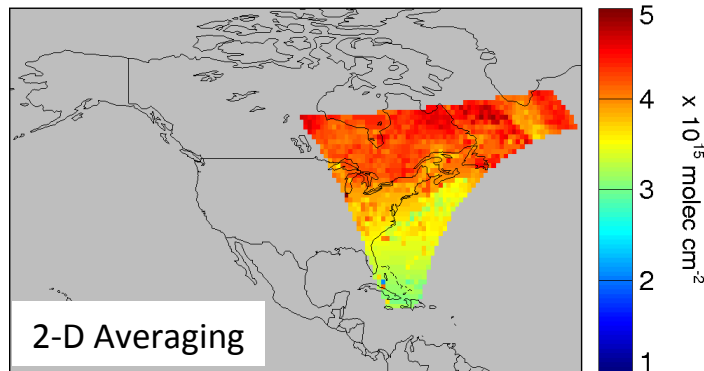
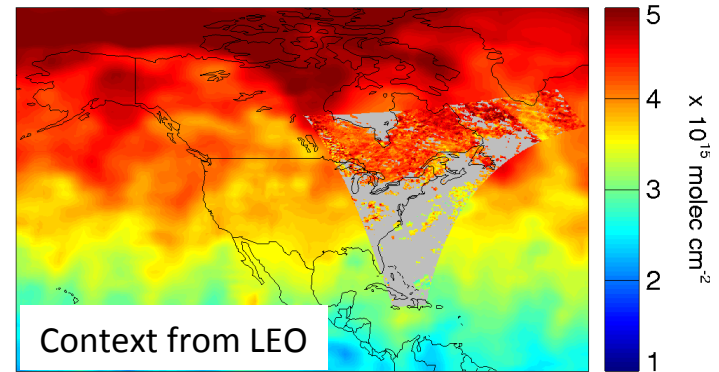
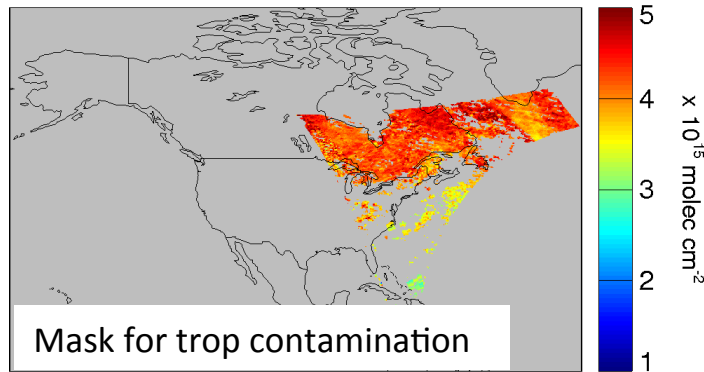
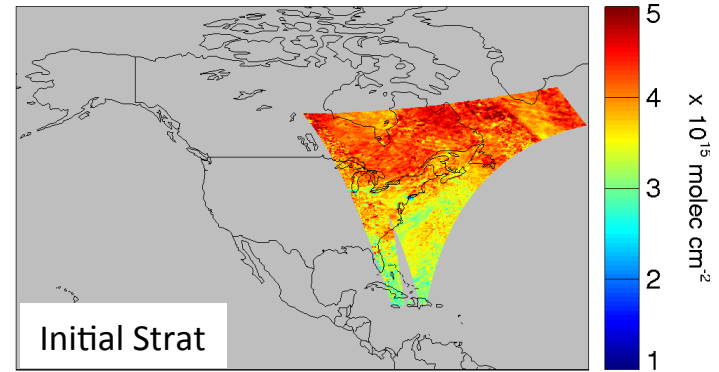
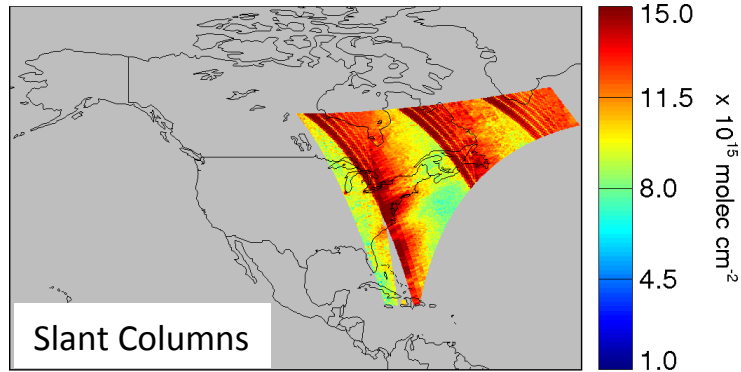
## Proposed Approach:

Geddes et al. (in prep)



# Proposed Approach (1130 UTC, July):

Geddes et al. (in prep)

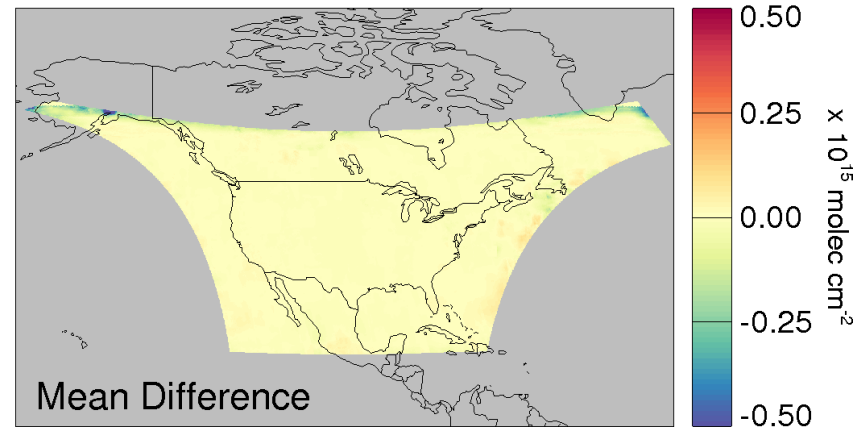
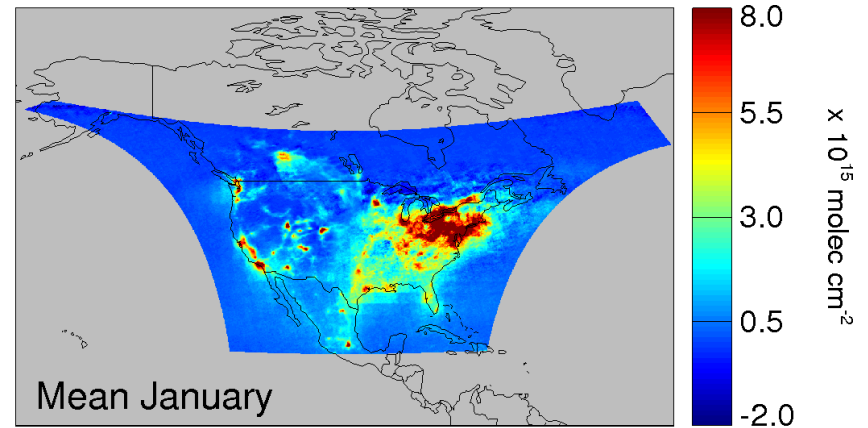
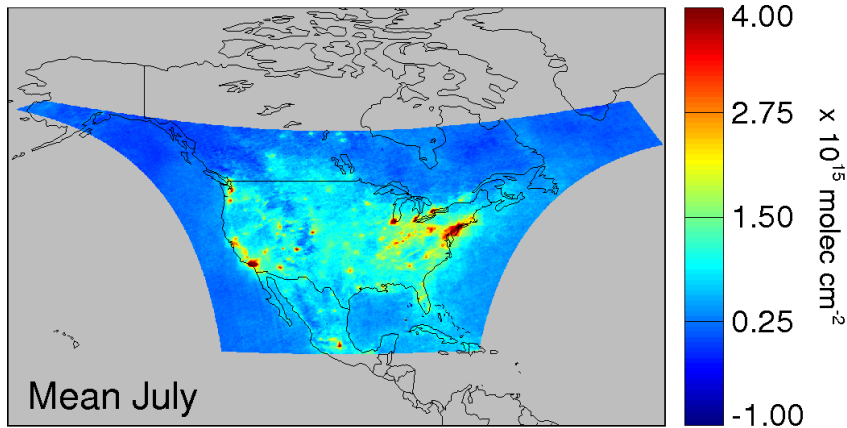


## Example Monthly Mean Tropospheric NO<sub>2</sub> Columns:

Geddes et al. (in prep)

### TEMPO Algorithm vs. Global Algorithm

- *Our TEMPO algorithm performs almost identically to operational global algorithm*
- *Very little penalty from limited field of view*



## Example Monthly Mean Troposphere Columns:

Geddes et al. (in prep)

TEMPO Algorithm (without context from LEO) vs. Global Algorithm

- *Even without supporting observations from LEO, our TEMPO algorithm performs strongly compared to operational global algorithm (small biases near edges)*

